

RESPONDING TO THE IED THREAT

Robert Hunter-Perkins
Head of Research
Conflict Armament Research (CAR)



Group of Experts meeting to Amended
Protocol II

Convention on Certain Conventional



iTrace
European Union Funded

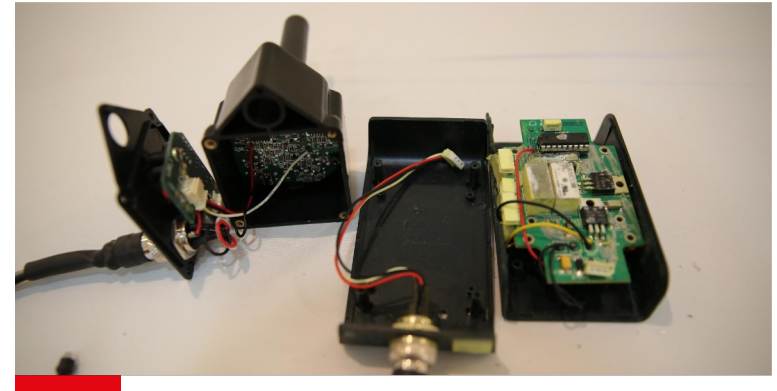


Geneva

10 November 2023

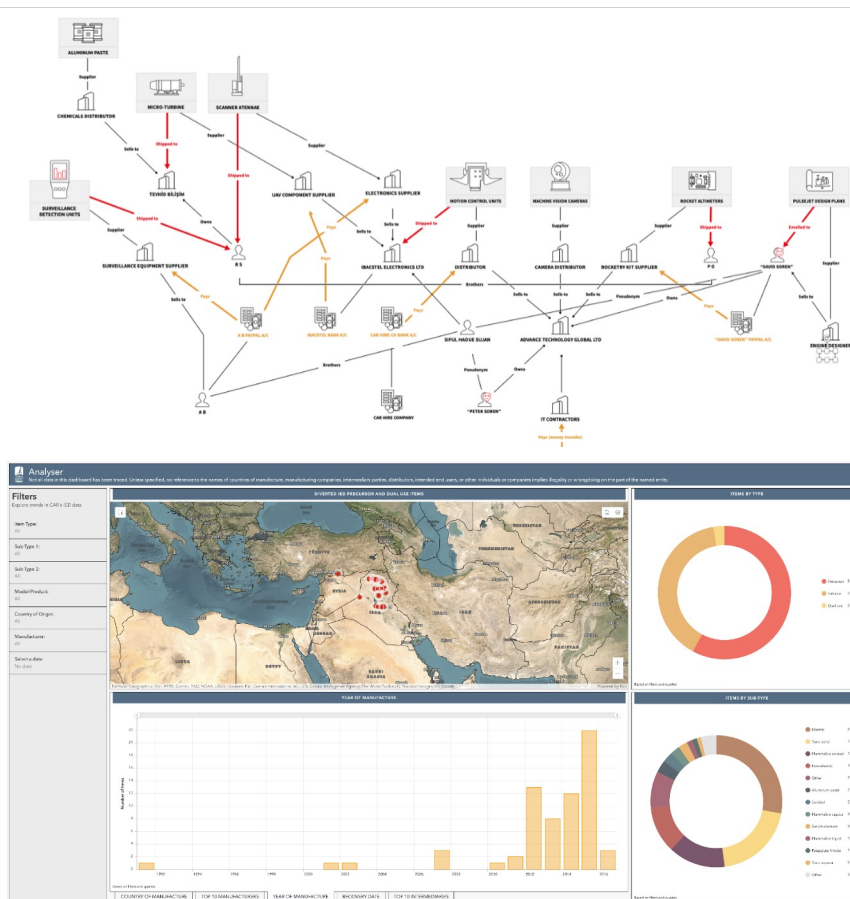
CAR'S OPERATIONS

- CAR deploys teams into active armed conflicts to document and trace weapons, ammunition, and related material including IEDs.
- CAR data is field-derived—no re-packaging of open-source material.
- Conduct supply chain mapping through tracing operations with governments and industry.



SUPPORTING UPSTREAM EFFORTS

- Alerting manufacturers and governments to diversion of commercial products.
- Identifying IED and component supply chains.
- Supporting international and regional cooperation, including information sharing.



LATEST PUBLICATIONS



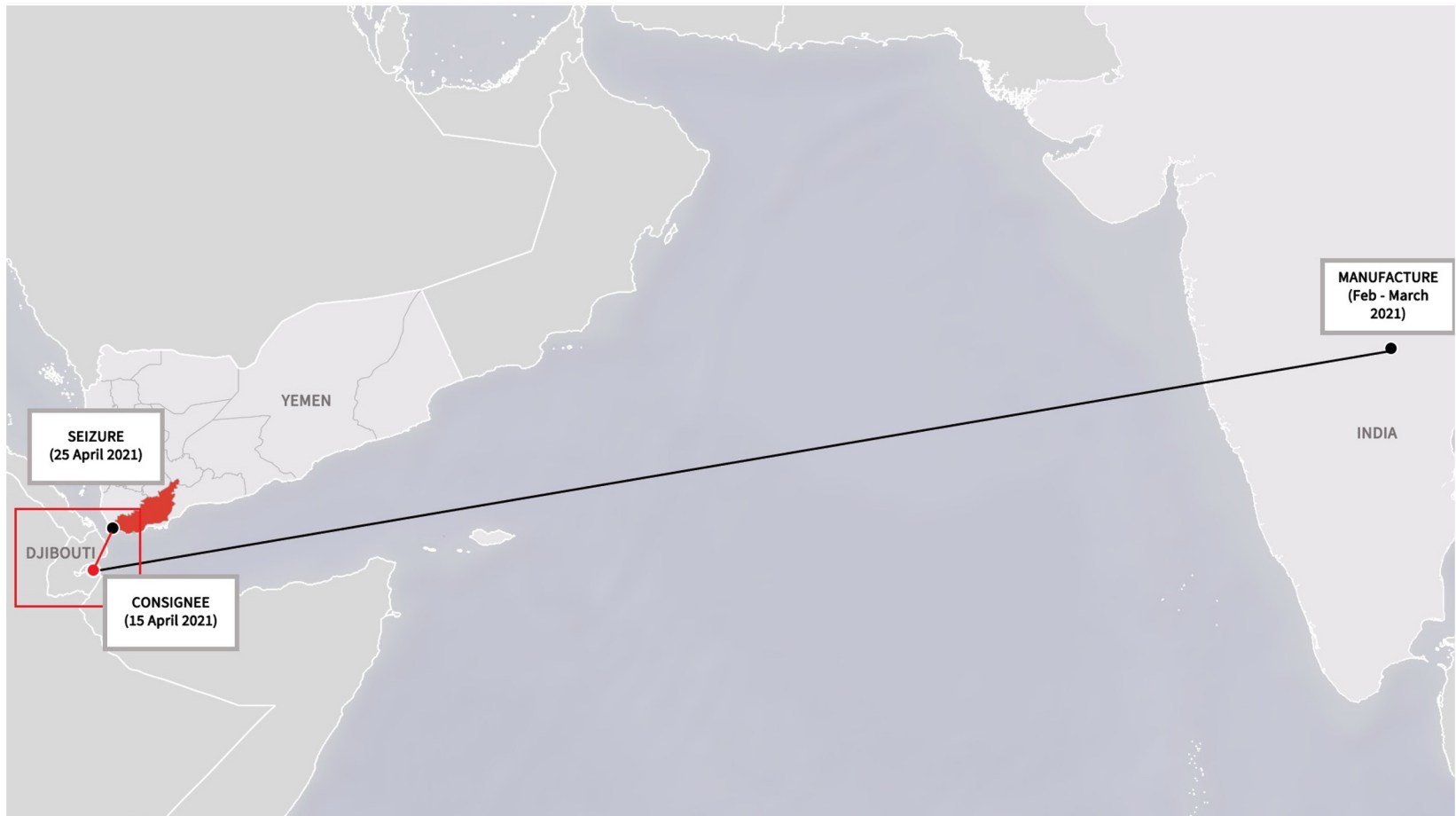
RED FLAGS



RED FLAG: RAPID RETRANSFER



RED FLAG: RAPID RETRANSFER



TRACKING DETONATOR SALES

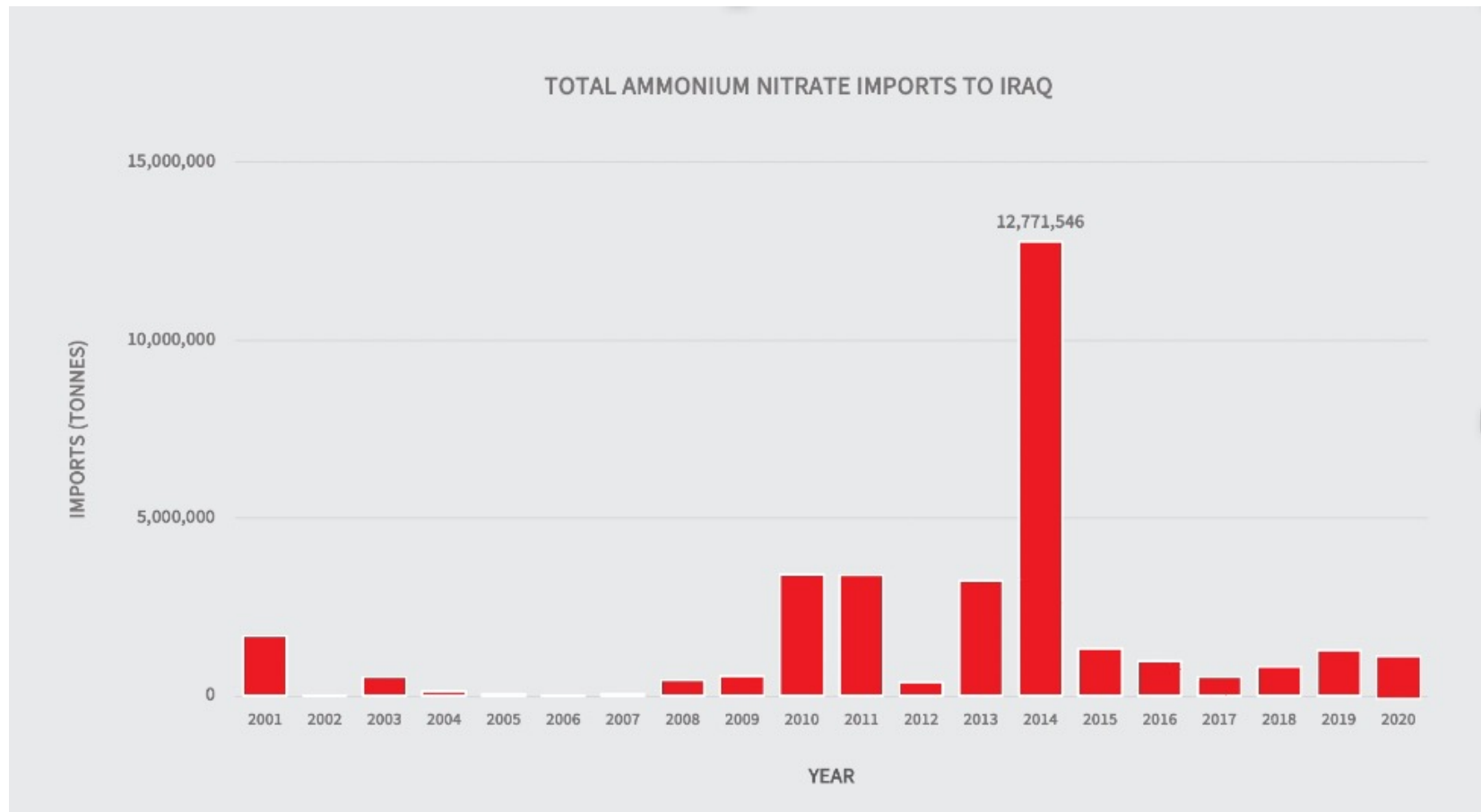
CONSIGNEE	2015	2016	2017	2018	2019	2020	2021
1				171,000			
2	15,100						
3		7,695					
4				49,853,500			
5				51,440,625			
6		67,500					
7		34,020					
8		402,379					
9		26,415					
10	68,681						
11							191,680,750
12							86,250
13		47,000					
14	52,200	87,000					
15	322,417				632,400	1,164,040	813,992
16			70,458	19,580		8,660	
17				59,400		52,000	143,600
18				10,000			
19	37,500	33,000					

CONSIGNEE 12 IMPORTS

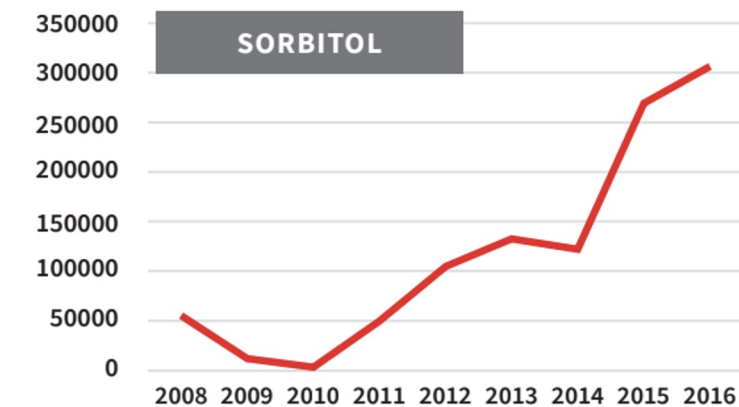
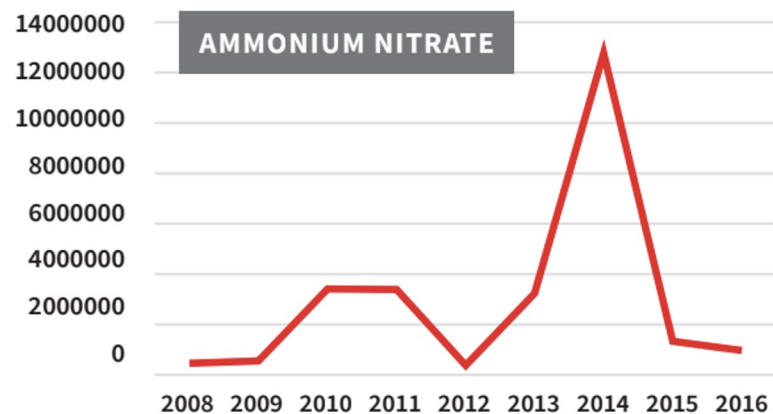
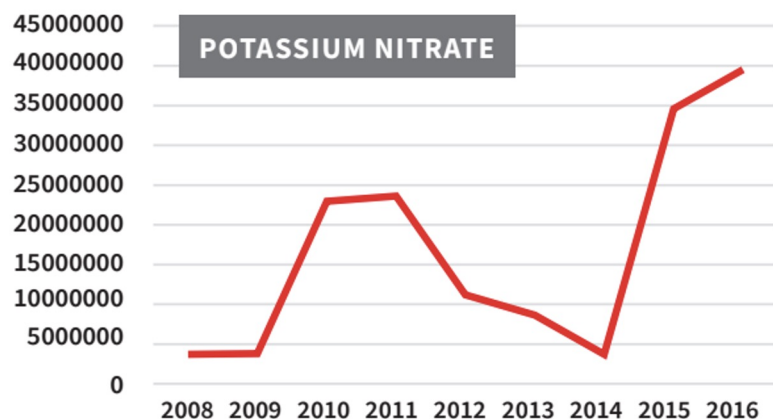
DATE OF EXPORT	GOODS DESCRIPTION	HS CODE (AS DECLARED)	NET WEIGHT (KG)	VALUE (USD)
08 February 2021	Sulphur powder (200 IS. Mesh)	25030010	154	44,314
08 March 2021	Diethyl ether	29091100	22,400	51,265
05 July 2021	Sulphur powder (200 IS. Mesh)	25030010	115,000	35,650
21 July 2021	Sulphur powder (200 IS. Mesh)	25030010	115,000	36,800
01 October 2021	Detonating cord 12 g/m	36030020	250,000	45,000
01 October 2021	Detonating cord 10 g/m	29091100	300,000	45,000
25 October 2021	Sodium nitrate (agriculture grade)	310250000	88,000	48,601

IEDS AND ISLAMIC STATE

RED FLAG: SPIKE IN SALES



PRECURSOR MATERIALS INTO IRAQ



NATIONAL AND REGIONAL RESPONSES

- Support efforts to trace diverted materiel and identify supply chain vulnerabilities.
- Utilize available and commercial data to highlight unusual trends or actors and integrate analysis into transfer decision-making.
- Share information regarding red flagged entities and routes, both with States and industry actors.

THANK YOU

CAR WEBSITE
www.conflictarm.com

iTRACE WEBSITE
www.itrace.com

EMAIL
perkins@conflictarm.com

